



# Pharmaceutical Industry Residency Program

## 2025 - 2026



# Table of Contents

A Letter from the Dean .....	3
About Florida A&M University .....	4
Residency Program History .....	5
Program Overview .....	6
About Bristol Myers Squibb .....	7
BMS Post-Doctoral Program Steering Committee .....	8
First-Year Overview: Clinical Residency .....	10
Second-Year Overview: Pharmaceutical Industry Residency .....	12
Current Residents .....	14
Alumni Remarks .....	15
Residency Alumni .....	16
Application and Recruitment Process .....	18



**JOHNNIE L. EARLY II,**  
PhD, RPh, Fellow NPhA

**CEO, Dean & Professor**

Florida A&M University College of  
Pharmacy and Pharmaceutical  
Sciences, Institute of Public  
Health

Dear Prospective Residents,

This pharmaceutical industry residency program was founded in 2009 as a partnership between Florida A&M University and Bristol Myers Squibb (BMS). The vision of the residency is to attract and develop a diverse group of talented pharmacists who bring clinical expertise, innovative ideas, and dedication to improving patient outcomes.

The program provides a two-year residency in the therapeutic area of oncology and hematology in the first year and either immunology or oncology in the second year. This residency provides its residents with a unique experience that bridges the gap between clinical practice and the pharmaceutical industry.

I am elated that Florida A&M University College of Pharmacy and Pharmaceutical Sciences, Institute of Public Health (FAMU CoPPS, IPH) has maintained a fruitful partnership with BMS, a global pharmaceutical company with residency training program that significantly enhances the skills of practitioners, while improving patients' health and attracting residents who help train PharmD learners.

The partnership with BMS aligns with the vision of the College, which is to provide excellent pharmaceutical education, research, and service activities statewide, nationally, and globally in a dynamic healthcare environment.

It is my hope that learners consider this unique program in clinical and pharmaceutical industry settings.

Sincerely,

Dean Johnnie L. Early II

# About Florida A&M University

The Florida A&M University College of Pharmacy and Pharmaceutical Sciences, Institute of Public Health program offers PharmD, M.S., and PhD degrees to its learners. With its main campus in Tallahassee, Florida, it is the first pharmacy program in the United States that has a fully accredited Institute of Public Health both on-site and throughout Florida managed by the College of Pharmacy. The College has additional pharmacy practice centers in Northeast Florida, South Florida, and Central Florida, which support the infrastructure for the College's statewide commitment to pharmacy education and public service.

The evolution of the College has witnessed the initiation of pharmacy education with just one learner in the beginning to now being one of the largest colleges of pharmacy in the country. Currently, the College has more than 1,000 learners and faculty. FAMU CoPPS, IPH has a rich history of producing high-caliber graduates capable of providing exceptional pharmaceutical care. Our unique program focuses on academic excellence, research superiority, and community service; this allows us to prepare learners for leading roles in the practice of pharmacy, research, and public health.

The College reinforces its primary mission through an active role and responsibility in the delivery, outcome, and study of pharmaceutical care services it shares with other healthcare providers. The College is committed to the advancement of pharmaceutical knowledge through teaching, research, and service in a supportive and caring environment that enhances the attainment of educational excellence and the highest standards in professional and ethical practice.





**NATHANIEL  
ERAIKHUEMEN,  
PharmD**

**Division Director and Professor  
of Pharmacy Practice**

Florida A&M University College  
of Pharmacy and Pharmaceutical  
Sciences, Institute of Public  
Health – South Florida Pharmacy  
Practice Center

*"The Florida A&M University (FAMU) and Bristol Myers Squibb (BMS) Pharmaceutical Industry Program was founded in 2009 through collaborative efforts of both institutions as an expansion of a very successful Advanced Pharmacy Practice Education (APPE) program. Karen Cohen of BMS, and the former FAMU CoPPS, IPH Associate Dean of Clinical Services, Dr. Michael Thompson, worked closely to shape the program and ensure that students from all Historical Black Colleges and Universities (HBCU) Pharmacy programs throughout the country have a competitive, yet unique experience to look forward to when applying from post-graduate pharmaceutical training programs.*

*The former Dean of the college, Dr. Henry Lewis, and Mr. Patrick Reilly, the former BMS Vice President of Medical Information, collaborated to ensure sponsorship of the program. Thus, paved the way for Dr. Lina (Gallego) Singleton, class of 2009, who became the first resident to complete the program. By its fourth year, the program grew to admit two residents per year.*

*Finally, in 2015 the program evolved to include a one-year clinical training experience analogous to the ASHP Post-Graduate Year One Residency (PGY1). I, Dr. Nathaniel Eraikhuemen as professor of Pharmacy Practice, was tasked with developing and managing the clinical portion of the training program. The second year of the program continues to focus on pharmaceutical industry training in BMS functional areas. Drs. Shanada Thomas Monestime and Marissa West were the first graduating class of the two-year program in 2017."*

– Nathaniel Eraikhuemen, **Residency Program Director**

# Program Overview

The FAMU/BMS Pharmaceutical Industry Residency Program provides its residents with the unique opportunity to gain clinical practice, academia, and pharma experience while completing their two-year post-doctoral training.

During their residency, residents can expect to spend the first 12 months in South Florida gaining skills and understanding in the oncology, hematology, and immunology therapeutic areas. The skills gained during the first year will help the resident acquire key knowledge of the therapeutic landscape and healthcare industry that they will apply in the second year of the program.

During the second year, residents will transition to New Jersey where they will apply their clinical knowledge to addressing unmet medical needs in the Medical Affairs functional area at Bristol Myers Squibb. Residents will spend 12 months working on either the Medical Strategy or Medical Communications teams to provide key deliverables.

Practice Area	Location	Length
Clinical Oncology Resident	Hollywood, FL	1 year
Medical Affairs Resident	Lawrenceville, NJ	1 year

## Residency Practice Sites



**Memorial Regional Hospital**  
3501 Johnson St.  
Hollywood, FL 33021

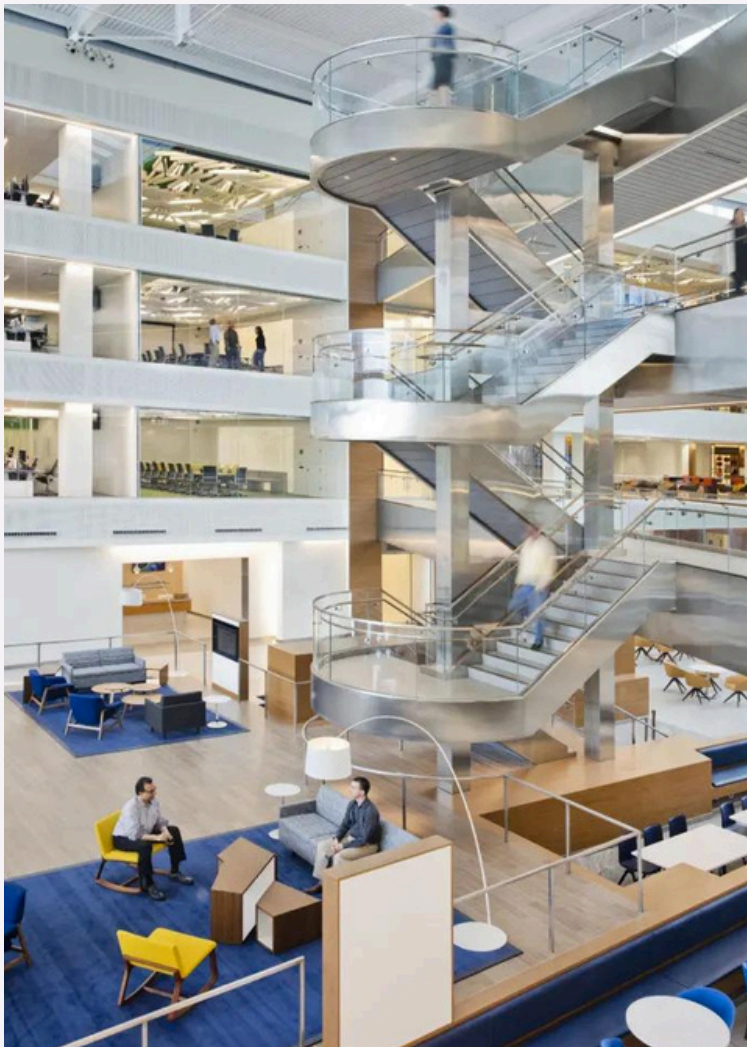


**Bristol Myers Squibb**  
3401 Princeton Pike  
Lawrenceville, NJ 08648

# About Bristol Myers Squibb

Bristol Myers Squibb is a global biopharmaceutical company firmly focused on its mission to discover, develop, and deliver innovative medicines that help patients prevail over serious diseases. We concentrate our research efforts in the following core therapeutic areas: Solid tumors, Hematology, Cardiovascular, Immunology and Neuroscience.

At Bristol Myers Squibb, our biopharmaceutical strategy uniquely combines the reach and resources of a major pharmaceutical company with the entrepreneurial spirit and agility of a successful biotechnology company.



Innovation is at the heart of everything we do. Innovation speaks the groundbreaking science in our laboratories, the state-of-the-art processes in our manufacturing plants, and our pioneering approach to product commercialization.

We are committed to the highest standards of ethics and integrity and promoting economic, social, and environmental sustainability. At Bristol Myers Squibb, we are passionate about science, passionate about innovation, and passionate about making a difference in the lives of patients.



# BMS Post-Doctoral Program Steering Committee



Melissa Harris, BSc,  
PharmD

Senior Vice President, Regional  
Clinical Operations  
Bristol Myers Squibb

*"Bristol Myers Squibb is a company committed to patients and offers tremendous opportunities for pharmacists with an interest in joining the pharmaceutical industry. I entered Bristol Myers Squibb through the Rutgers University PharmD Fellowship program, thus I have first-hand experience with the impact that preceptors, mentors, and the pharmacist community have on our incoming fellows and residents. Now as manager and sponsor of the program, I am proud to foster an environment where members of our PharmD program are provided opportunities to gain experience and new skills that will prepare them for future opportunities to succeed in the pharmaceutical industry."*

*As a leader at Bristol Myers Squibb, I know the importance of investing in and engaging talent to fulfill our company's mission for patients. The Florida A&M University Pharmaceutical Industry Residency is an important part of our talent strategy and key to cultivating the Bristol Myers Squibb culture and its future."*

– Melissa Harris, **Executive Sponsor of the BMS Post-Doctoral Steering Committee**





# BMS Post-Doctoral Program Governance

## Executive Steering Committee



**Melissa Harris,  
BSc, PharmD**

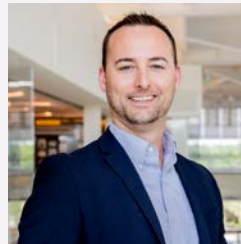
Sr. Vice President,  
Regional Clinical  
Operations

## Steering Committee Leads



**Priya Darouian,  
PharmD**

Head, Advanced  
Practice Programs  
& Medical  
Innovation



**Thomas Lehman,  
PharmD**

Executive Director,  
WW Medical  
Rheumatology

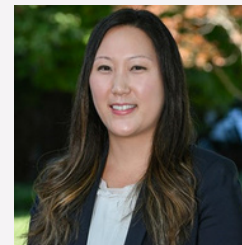
## Steering Committee Members



**Catherine  
Merrill, PharmD**  
Director, Clinical  
Trial Lead  
Oncology



**Ijeoma  
Oyetunde,  
PharmD**  
Director, WW  
Medical Oncology  
Product Design  
and Delivery Lead



**Jully Kim,  
PharmD**  
Director, Global  
Congress  
Excellence,  
Congress  
Operations



**Matthew Lupo,  
MCIS**  
Executive Director,  
Commercial  
Regulatory Affairs



**Kim Tran,  
PharmD**  
Vice President,  
US Field Medical  
Hematology



**Peter Fendt,  
PharmD**  
Director,  
Business Insights  
& Analytics



**Victoria  
Berger,  
PharmD**  
Senior Clinical  
Scientist

# First Year Overview: Clinical Residency

In the first year, residents will participate in clinical pharmacology and pharmacy practice with emphasis in hematology, oncology, and immunology medicine at practice sites located in South Florida and Florida A&M University College of Pharmacy and Pharmaceutical Sciences, Institute of Public Health.

Residents will actively provide pharmaceutical care to patients with cancer in a variety of areas while at practice sites. While at the College, the residents will also participate in workshops, meetings, and other engagements to promote professional growth. As a clinical resident and adjunct faculty, the resident will have the opportunity to:

- Provide pharmaceutical care and patients education within inpatient and outpatient settings
- Deliver lectures to student pharmacists, pharmacists, nurses, and medical students
- Collaborate with preceptors to educate pharmacy students
- Conduct research with the opportunity to present findings at various conferences
- Interact with healthcare providers to optimize treatment regimens

## Adjunct Faculty Experience

### **Oncology Lecture Series:**

Clinical oncology residents will have the opportunity to use the clinical knowledge of oncology and hematology they acquire over the first 12 months of the program to refine their public speaking and teaching capabilities as they lead lectures to third-year pharmacy students in oncology and hematology therapeutics. This teaching experience will include writing test questions, leading labs, and developing teaching materials.

### **Weekly Seminar:**

Residents are an integral part of the South Florida Pharmacy Practice Center faculty team. As such, residents assist with facilitating weekly seminar classes for fourth-year pharmacy students. This includes responsibilities such as leading case discussions and lectures, proctoring exams and quizzes, and conducting workshops (CV reviews/mock interviews) in support of post-doctoral application preparation.

### **Research Mentorship:**

While learning the key principles of conducting high-quality research by leading their own research projects, oncology clinical residents are able to share the knowledge and skills they gain by serving as research mentors to a subset of fourth-year pharmacy students completing clinical research projects. This includes providing feedback on research proposals, reviewing manuscripts and posters to ensure the quality of student pharmacist clinical research.

# Clinical Residency Experience

First-year clinical oncology residents will complete their training with Memorial Regional Hospital. This multi-site program also allows for clinical experiences at Memorial Specialty, Memorial Regional Hospital West, Memorial Sickle Medical Home and Memorial Cancer Institute.

Memorial's pharmacy residents practice excellent, patient-focused pharmaceutical care, with the goals of promoting favorable patient outcomes, improving the health status of the community and achieving a high level of patient satisfaction. Residents study several clinical specialties and provide care for a wide range of patients. They also educate patients, pharmacists, nurses, physicians and other members of the healthcare team on drug-related topics.

## Purpose

- Build upon Doctor of Pharmacy (PharmD) education
- Contribute to the development of clinical pharmacists responsible for medication-related care of patients with a wide range of conditions

## Clinical Rotations:

General Medicine	Oncology/Hematology
<ul style="list-style-type: none"> <li>• Hospital Administration</li> <li>• Neurocritical Care Intensive Care Unit</li> <li>• Ambulatory Care</li> <li>• Internal Medicine</li> <li>• Advanced Hospital</li> <li>• Research</li> </ul>	<ul style="list-style-type: none"> <li>• Non-Malignant Hematology - Sickle Cell Disease</li> <li>• Inpatient Medical Oncology</li> <li>• Academia</li> <li>• Transitions of Care - Oncology/Hematology</li> <li>• Oncology Medication Access</li> <li>• Investigational Drug Services</li> </ul>

\*Clinical rotations are subject to change

## Staffing:

Residents are required to function as a clinical pharmacist in the inpatient setting every other weekend and two of three major holidays during the first year. Inpatient staffing responsibilities include anticoagulation and pharmacokinetic monitoring, medication reconciliation, and order verification. Residents will primarily staff in the oncology and transplant units.

## Teaching and Preceptorship:

Residents will have the opportunity to precept APPE pharmacy students and develop presentation(s) for noon Lunch & Learn lectures. Residents may also have the opportunity to obtain an elective Teaching Certificate from the University of Connecticut.

Longitudinal Activities			
Formal Research Project	Medication Use Evaluation	Research Presentation*	SESHP Continuing Education Presentation
Monthly Adverse Drug Reports	Journal Club Continuing Education Presentation	Pharmacy Committee Meetings	Residency Advisory Committee Meeting

\*Presented in several settings including ASHP Midyear, with possible opportunities for international conferences

# Second-Year Overview: Pharmaceutical Industry Residency

In the second year, the PharmD residents will transition to central New Jersey where they will gain a diverse set of leadership skills and unique cross-functional experiences to launch a successful career in the pharmaceutical industry. Each resident will be positioned on a team within the Medical Affairs organization where they can provide significant contributions to the development, launch, and lifecycle management of various assets within BMS portfolio.

Our residents will lead critical initiatives and collaborate with a variety of US and global BMS colleagues, key opinion leaders, healthcare professionals, and other cross-functional colleagues at BMS. As a continuum from the first-year experience, the residents will be involved in providing their clinical knowledge and better meet the needs of our customers and improve patient care.

## Goals

- Understand the roles and responsibilities of a PharmD in the Medical Affairs organization
- Engage with teams across the medical matrix to collaborate with key team members and complete high-priority projects
- Become an integral part of their respective teams and take ownership of key deliverables

## BMS Committees:

Residents have the opportunity to gain leadership experience by taking part in BMS Fellowship and Residency Committees such as:

- Alumni Committee
- Scholarship Committee
- Recruitment Committee
- Professional Development Committee
- Community Development Committee

## Mentorship:

Residents are expected to take on an active mentorship role by mentoring rotating fourth-year pharmacy students while on APPE rotations and participating in Fellow and Resident Roundtable sessions.



# Pharmaceutical Industry Experience

## WW Medical Communications, Thoracic Oncology

This pharma residency track provides the resident with a 12-month experience in the evolving area of oncology research and pharmaceutical development in thoracic cancers. The fellow that participates in this pharma track will gain a broad understanding of Medical Communications through both participatory and leadership experiences.

During the year, the resident will gain experience working on the WW and the US Medical Communications book of work across the thoracic oncology portfolio, including publication planning and development of abstracts, congress presentations, manuscripts, and scientific content materials.

Past residents of this track have gone on to lead successful careers in Medical Affairs such as Medical Science Liaison, Medical Strategy, Publications and Scientific Content as well as in Clinical Development as a Clinical Scientist.

### Key Experiences:

- Lead the development and execution of comprehensive publication plans (e.g. abstracts, congress posters, oral presentations)
- Collaborate with authors and agencies to develop medical publications to inform clinical practice

### Preceptor:



**Sruthi Gaddam, PharmD, MBA, CMPP**  
Director, WW Medical Oncology, Medical Communications

## US Medical Strategy, Immunology

This pharma residency track provides the resident with a 12-month experience working in an exciting and competitive area of research and pharmaceutical development: Immunology. The resident that participates in this pharma track will gain a broad understanding of Medical Affairs through both participatory and leadership experiences.

During the course of the year, the resident is expected to experience several important market events including post-launch support of immunology assets and congress engagement planning and execution.

Past residents of Medical Strategy have gone on to lead successful careers in Medical Affairs such as Medical Science Liaison, Field Medical Excellence, and Marketing.

### Key Experiences:

- Engage closely with field medical colleagues to develop and provide trainings and to analyze field medical insights to inform medical strategy
- Collaborate with cross-functional teams including worldwide medical, health economics and outcomes research, medical evidence generation, and Commercial stakeholders to execute the medical strategy

### Preceptor:



**Andrew Thorpe, PhD**  
Senior Director, US Medical Lead, Neurology- Zeposia

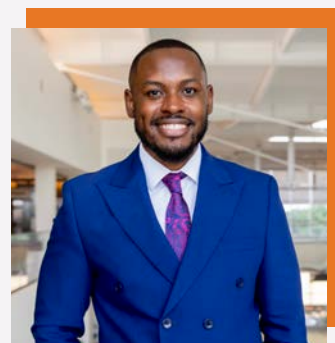
## Second Year Residents



Maxwell is originally from Benin city, Nigeria. He received his PharmD from Texas Tech University Health Sciences Center. During pharmacy school, he served as a leader and fundraising chair of Phi Delta Chi at his institution. During his year as a clinical oncology resident, Dr. Okunrobo led a research project investigating chemotherapy and/or immunotherapy after progression on Tyrosine Kinase Inhibitors in EGFR mutant non-small cell lung cancer patients which will be presented at the International World Conference on Lung Cancer in September of 2024.

**MAXWELL OKUNROBO, PharmD**  
**WW Medical Communications, Thoracic Oncology**

Jenoy is a native of Manchester, Jamaica. He earned his PharmD from the University of Maryland School of Pharmacy. During pharmacy school, Dr. Merchant served as Class President, Vice President of Professional Development in AMCP, and an executive board member of his institution's Phi Lambda Sigma chapter. In his stint as a clinical oncology pharmacy resident, Dr. Merchant led a research project evaluating treatment outcomes of vascular endothelial growth factor use in patients with radiation induced brain necrosis, which will be presented at the International World Conference on Lung Cancer in September of 2024. Additionally, Dr. Merchant currently serves as the chief resident of BMS's Post Doctoral Programs.



**JENOY MERCHANT, PharmD**  
**US Medical Strategy, Immunology & Neurology**

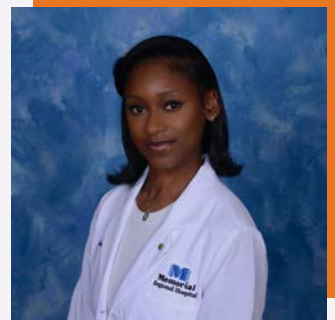
## First Year Residents



**T'YANNA MONTAGUE, PharmD**  
**Clinical Oncology Resident**

T'yanna is originally from Egg Harbor Township, New Jersey. She earned her PharmD from Howard University College of Pharmacy, where she was named valedictorian of her class. During pharmacy school, she functioned as a mentor and tutor to her peers. Additionally, she served as Vice President of Patient Care in the APhA, Howard chapter. Dr. Montague engaged in various research projects and presented findings the APhA and ASHP conferences. In her downtime, she enjoys cooking, traveling, and going to the beach. She anticipates expanding her clinical knowledge, professional network advancing patient outcomes.

Ashley is originally from Fort Lauderdale, Florida. She received her PharmD from Florida A&M University College of Pharmacy. During pharmacy school, she demonstrated a commitment to leadership, serving as a board member of Phi Lambda Sigma, Vice President of the Gamma Zeta Chapter of the Industry Pharmacists Organization (IPhO), and global health researcher for the FSU/FAMU Global Health Research Initiative. Beyond academia, Dr. Hicks looks forward to supporting students in their pharmacy aspirations and making a lasting impact throughout the residency program.



**ASHLEY HICKS, PharmD**  
**Clinical Oncology Resident**



**Avery Edwards, PharmD**  
Senior Manager, Soryktu Medical Strategy, US Medical Immunology, Bristol Myers Squibb

*"When searching for post-doctoral training programs, I sought one that would empower me as a clinician entering the pharmaceutical industry with a PharmD, equip me with a diverse professional skillset, and support me through the inevitable challenges of growth. During my residency with the FAMU/BMS program, I found all of that and more. As a PGY1 resident, I acquired essential skills in collaborating with interdisciplinary healthcare providers, leading and publishing clinical research, teaching and presenting clinical data, and expertise in immunology and oncology; all of which accelerated my integration into medical affairs. As a PGY2 resident on the US Medical Strategy team, I made meaningful contributions and took ownership of high-impact projects as a trusted team member. Furthermore, throughout my training, I benefited from a vast and ever-present network of support from leadership across BMS, FAMU, Memorial Healthcare System, and residency alumni. The experience I gained from the FAMU/BMS program enabled me to secure my ideal role within the medical affairs organization and remain at BMS. I am deeply appreciative of the impact this program has had on my professional journey and the relationships I've cultivated."*

**-Avery Edwards, US Medical Strategy, Immunology Resident 2022-2024**



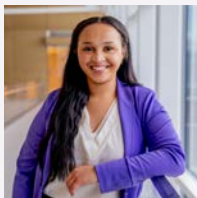
**Imani Carpenter, PharmD**  
Senior Manager, Medical Communications, WW Medical Oncology, Bristol Myers Squibb

*"My experience in the FAMU/BMS program was incredibly enriching, equipping me with the skills and expertise necessary to excel in my career. From day one, the program's dedication to fostering professional development and providing a nurturing environment has been evident. One of the most rewarding experiences in the program was collaborating with a multidisciplinary team on impactful projects that are improving the lives of patients. The mentorship and guidance from preceptors and alumni were among the most enriching aspects of the program, with their unwavering support and extensive expertise playing a crucial role in my development. Additionally, the opportunity to educate and mentor pharmacy school students allowed me to cultivate essential leadership and communication skills. Overall, this program has profoundly shaped my career path and personal growth, equipping me with the tools and confidence to excel in the healthcare industry."*

**-Imani Carpenter, US & WW Oncology Medical Communications Resident 2022-2023**



# Residency Program Alumni



Imani Carpenter PharmD  
Senior Manager, Medical Communications, WW  
Medical Oncology, BMS

US & WW Oncology Medical Communications  
Resident, 2022-2024



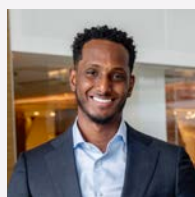
Avery Edwards, PharmD  
Senior Manager, Soryktu Medical Strategy, US  
Medical Immunology, BMS

US Immunology Medical Strategy Resident,  
2022-2024



Alyssa Morgan, PharmD, BCOP  
Medical Science Liaison, Breast Cancer, AstraZeneca

WW Oncology Publications Resident,  
2022-2023



Nabil Sukar, PharmD  
Medical Science Liaison, Alzheimer's Disease, Eisai

US Immunology Medical Strategy Resident,  
2021-2023



Franco Dickson, PharmD  
Associate Director, WW Medical Oncology,  
Medical Communications, BMS

WW Oncology Publications - Early Transition  
Assets Resident, 2020-2022



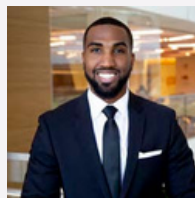
Raena Rhone Grace, PharmD  
Medical Science Liaison, Neuropsychiatry, BMS

US Immunology Medical Strategy Resident,  
2020-2022



Richie Onwuchekwa Uba, PharmD  
Senior Clinical Research Scientist, Hematology,  
Genmab

WW Immuno-Oncology Publications &  
Scientific Content Resident, 2019-2021



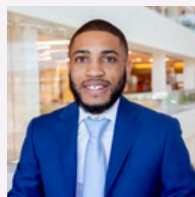
Aaron North, PharmD  
Medical Science Liaison, Thoracic Oncology Portfolio,  
AstraZeneca

US Immunoscience Medical Strategy Resident,  
2019-2021



Imani Pelt Nosa, PharmD  
Global Oncology Publications Lead, Astellas Pharma

WW Early Oncology Medical Communication,  
2018-2020



Donalle Johnson, PharmD  
Associate Director, US Field Medical Content Excellence  
& Project Management, Eisai

US Immuno-Oncology Medical Strategy Resident,  
2018-2020



Bryandt Douglas, PharmD  
Senior Medical Science Liaison, Cell Therapy, BMS

WW Medical Oncology Publications Resident,  
2017-2019



Victoria Spence, PharmD  
Senior Medical Science Liaison, Thoracic Oncology,  
AstraZeneca

US Oncology Medical Strategy Resident,  
2017-2019



Jessie Nia Ross, PharmD, CMPP  
Medical Director, US Immunology Franchise (Pipeline)  
for NextGen Immunology, Sanofi

WW Medical Oncology Publications Resident,  
2017-2018



Kevin Clarke, PharmD  
Director, Global Scientific Affairs Strategy, Vertex  
Pharmaceuticals

WW Medical Oncology Publications Resident,  
2016-2018



# Residency Program Alumni



Marissa West, PharmD  
Director, US Medical Oncology, Gilead Sciences

WW Medical Oncology Publications Resident,  
2015-2017



Shanada Monestime, PharmD, BCOP  
Director, Community Engaged Research, GO2 for Lung  
Cancer

WW Oncology Medical Information Resident,  
2015-2017



Temeitope Osiyemi, PharmD  
Medical Science Director, Genentech

Medical Information Resident, 2014-2015



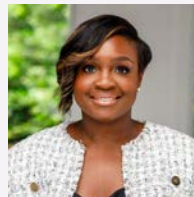
Jade Hoang, PharmD, MBA  
Director of Marketing, US Cardiovascular, BMS

R&D Strategy and Analytics Resident, 2014-  
2015



Karina Utkina, PharmD  
Medical Director, Hematology/Oncology, Pharmacosmos  
Therapeutics Inc.

R&D Strategy and Analytics Resident, 2014-  
2015



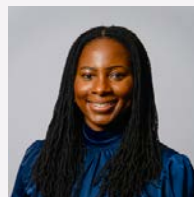
Ijeoma Nwosu Oyetunde, PharmD  
Director, WW Medical Oncology - Product Design &  
Delivery, BMS

Medical Information Resident, 2013-2014



Dawn Bey, PharmD, MBA  
Field Regional Lead, Health Economics Outcomes  
Research, Vertex Pharmaceuticals

R&D Strategy and Analytics Resident, 2012-  
2013



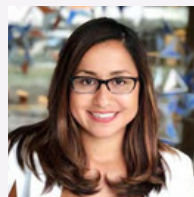
Kiitan Babalola, PharmD, MBA  
Regional Medical Scientific Director, Oncology, Merck

Medical Information Resident, 2012-2013



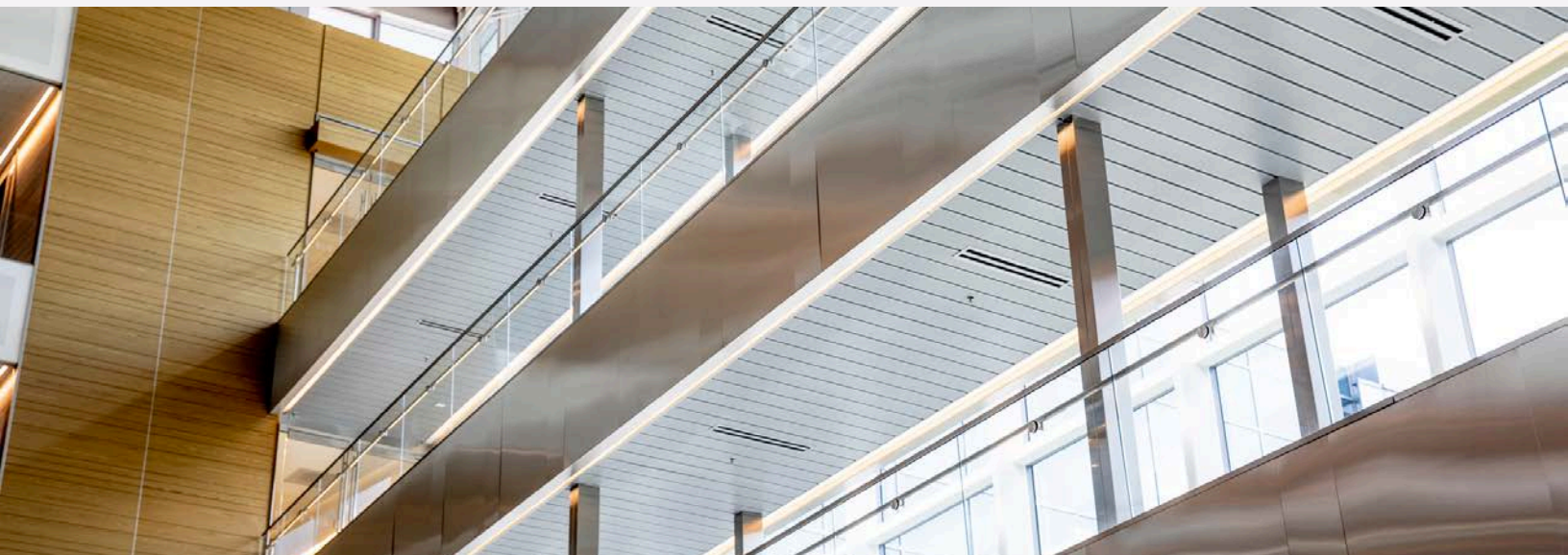
Christina Wright, PharmD  
National Director, Immunology Field Medical, Sobi  
Pharmaceuticals

Medical Information Resident, 2011-2012



Lina Singleton, PharmD  
Senior Director, Solid Tumors Scientific  
Communications, ImmunoGen/AbbVie.

Medical Information Resident, 2009-2010



## Eligibility Requirements:

FAMU/BMS Residents will be expected to both practice in a diverse clinical practice environment and corporate pharma company. As such, all prospective residents will require the following:

- Doctor of Pharmacy (PharmD) degree from an accredited institution prior to the start of the residency
- Selected candidates are required to obtain **pharmacist licensure in the state of Florida prior to or within 90 days** of starting the first year of residency (A Florida pharmacy intern license will be required while pharmacist licensure is pending)
- All candidates must have authorization to work in the United States. The program does not currently sponsor candidates for H-1B status to work as pharmacy residents.

## Application Materials:

Required Item	Due Date
Letter of Intent (LOI)	November 4th
Curriculum Vitae (CV)	November 4th
Unofficial transcript	November 4th
(3) Letters of Recommendation	November 18th

### Letters of Intent and Letters of Recommendation should be addressed to:

Nathaniel Eraikhuemen, PharmD  
Division Director and Professor  
Florida A&M University College of Pharmacy and Pharmaceutical Sciences, IPH  
10650 State Road 84  
Suite 200  
Davie, FL 33324

## Application Submission:

All application materials must be submitted electronically via the FellowMatch portal [here](#).

Interviewing will be conducted on a rolling basis once the application portal opens on Oct 15th, therefore we strongly encourage candidates to submit application materials prior to the application deadline. **The deadline for all application materials is Monday, November 18, 2024.**

Recommenders must email Letters of Recommendation directly to [famu@bms.com](mailto:famu@bms.com). The subject line should adhere to the following format: [Candidate Name] - Letter of Recommendation 2025-2027

*(Example: Jane Doe – Letter of Recommendation 2025-2027).*

## Interview Process:

Candidates should prepare to complete first round, second round, and virtual final-round interviews. Select candidates will be invited to a virtual reception with Residency Program alumni and stakeholders.

Select candidates will be invited for a virtual final round interview. Final-round interviews will include an oral presentation delivered by the candidate and a clinical competency assessment.

One candidate will be selected for each available position for a total of two candidates. All applicants will be notified of their status by the end of December 2024.

For additional questions, please email us at [famu@bms.com](mailto:famu@bms.com) or visit our [website](#) for more information.

# 2024 Recruitment Timeline



Residency Webinar #1 ([Register here](#))



Residency Webinar #2 ([Register here](#))



Application portal opens



Interviews begin



Application submission deadline (all materials due)



Offers made to candidates



**FAMU** [ COLLEGE OF  
**PHARMACY  
+ PHARMACEUTICAL  
SCIENCES** INSTITUTE OF PUBLIC HEALTH ]  
FLORIDA AGRICULTURAL AND MECHANICAL UNIVERSITY

 Bristol Myers Squibb